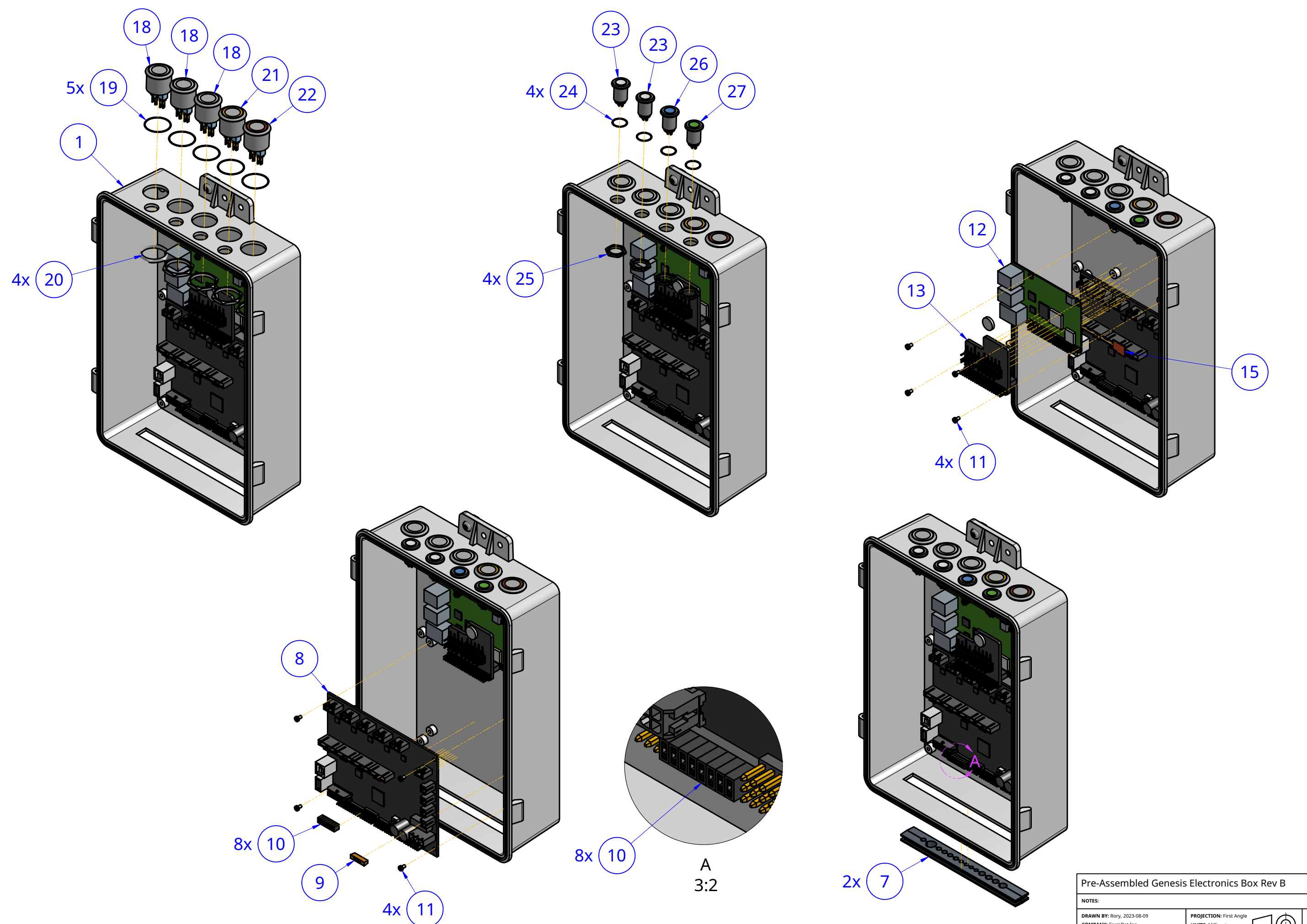


1 2 3 4 5 6 7 8 9 10

A
B
C
D
E
F
G
H

A
B
C
D
E
F
G
H



Pre-Assembled Genesis Electronics Box Rev B

NOTES:

| | | | |
|---------------------------------------|-------------------------|--|---------------|
| DRAWN BY: Rory, 2023-08-09 | PROJECTION: First Angle | | SHEET: 1 of 4 |
| COMPANY: FarmBot Inc | UNITS: Millimeters | | SIZE: A3 |
| LICENSE: CC0 Public Domain Dedication | SCALE: 1:3 | | |

1 2 3 4 5 6 7 8 9 10

1 2 3 4 5 6 7 8 9 10

A

A

B

B

C

C

D

D

E

E

F

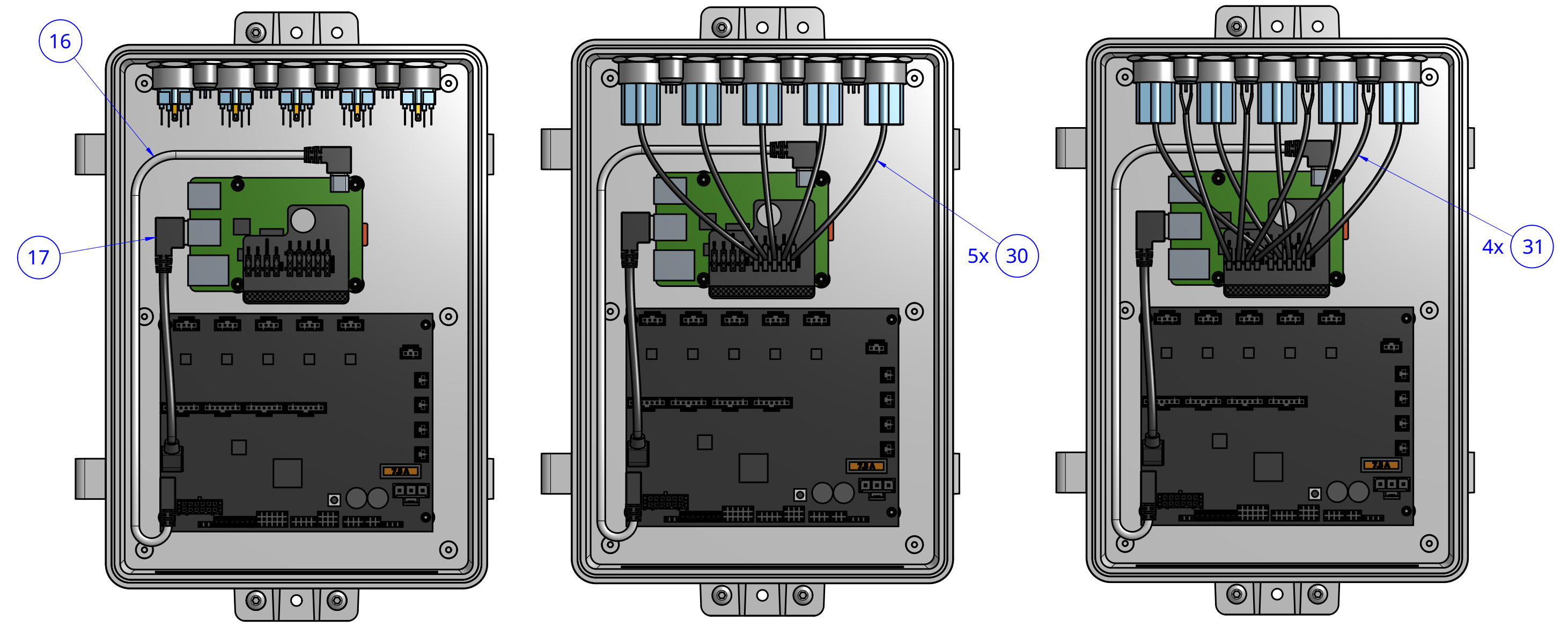
F

G

G

H

H



Pre-Assembled Genesis Electronics Box Rev B

NOTES:

| | | | |
|---------------------------------------|-------------------------|--|---------------|
| DRAWN BY: Rory, 2023-08-09 | PROJECTION: First Angle | | SHEET: 2 of 4 |
| COMPANY: FarmBot Inc | UNITS: Millimeters | | SIZE: A3 |
| LICENSE: CC0 Public Domain Dedication | SCALE: 1:2 | | |

1 2 3 4 5 6 7 8 9 10

1 2 3 4 5 6 7 8 9 10

A

A

B

B

C

C

D

D

E

E

F

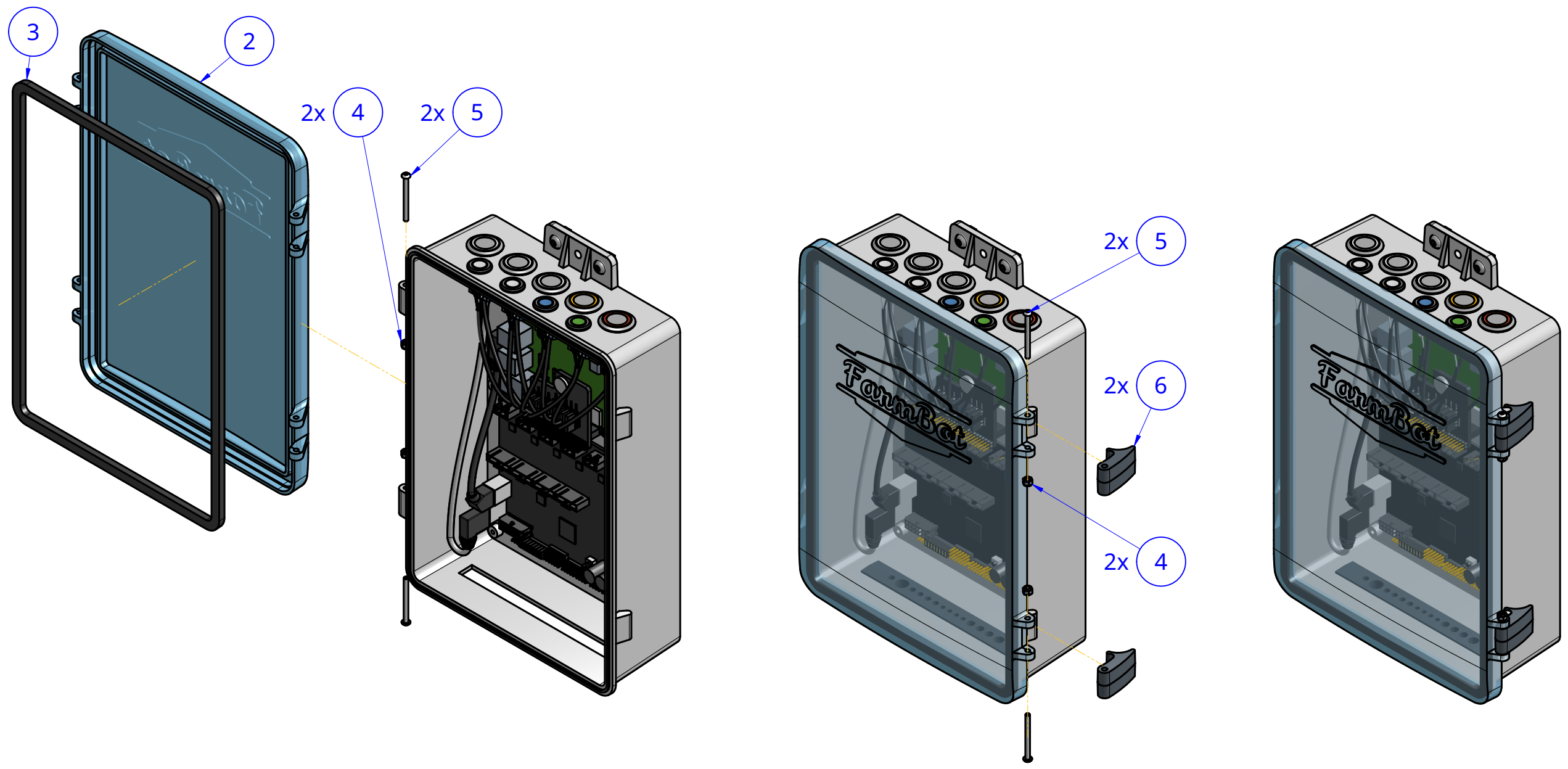
F

G

G

H

H



| | | | |
|---|-------------------------|--|---------------|
| Pre-Assembled Genesis Electronics Box Rev B | | | |
| NOTES: | | | |
| DRAWN BY: Rory, 2023-08-09 | PROJECTION: First Angle | | SHEET: 3 of 4 |
| COMPANY: FarmBot Inc | UNITS: Millimeters | | SIZE: A3 |
| LICENSE: CC0 Public Domain Dedication | SCALE: 1:3 | | |

1 2 3 4 5 6 7 8 9 10

1 2 3 4 5 6 7 8 9 10

A

| Item | Internal Part Name | Rev | Quantity |
|------|---|------|----------|
| 1 | Genesis Electronics Box (Box) | A | 1 |
| 2 | Genesis Electronics Box (Lid) | A | 1 |
| 3 | Genesis Electronics Box (Gasket) | A | 1 |
| 4 | M3 Locknut | | 4 |
| 5 | M3 x 35mm Screw | | 4 |
| 6 | Electronics Box (Latch) | A | 2 |
| 7 | Genesis Electronics Box (Supergland Half) | A | 2 |
| 8 | Farmduino v1.6 | 2.2A | 1 |
| 9 | Fuse - 7.5A | | 1 |
| 10 | Shunt - 1x2, 2.54mm | | 8 |
| 11 | M2.5 x 4mm Screw (2mm Hex Drive) | | 8 |
| 12 | Raspberry Pi 4B - 1GB | | 1 |
| 13 | Pi Adapter Board w/ RTC | | 1 |
| 14 | CR1220 RTC Battery | | 1 |
| 15 | Micro SD Card - 8GB Sandisk Industrial | | 1 |
| 16 | Raspberry Pi Power Cable - Type-C | A | 1 |
| 17 | Farmduino Data Cable | A | 1 |
| 18 | Push Button - White | | 3 |
| 19 | Push Button - O-Ring | | 5 |

B

C

D

E

F

G

H

1 2 3 4 5 6 7 8 9 10

A

B

C

D


E

F

G

H

| Item | Internal Part Name | Rev | Quantity |
|------|------------------------------|-----|----------|
| 20 | Push Button - Nut | | 5 |
| 21 | Push Button - Yellow | | 1 |
| 22 | Push Button - Red | | 1 |
| 23 | LED Indicator - White | | 2 |
| 24 | LED Indicator - O-Ring | | 4 |
| 25 | LED Indicator - Nut | | 4 |
| 26 | LED Indicator - Blue | | 1 |
| 27 | LED Indicator - Green | | 1 |
| 28 | Nut Bar - 10mm | A | 4 |
| 29 | M5 x 10mm Screw | | 4 |
| 30 | Push Button Wiring Harness | | 5 |
| 31 | LED Indicator Wiring Harness | | 4 |

| | | | |
|--|--|---|------------------------------|
| Pre-Assembled Genesis Electronics Box Rev B | | | |
| NOTES: | | | |
| <small>DRAWN BY: Rory, 2023-08-09</small> | <small>PROJECTION: First Angle</small> |  | <small>SHEET: 4 of 4</small> |
| <small>COMPANY: FarmBot Inc</small> | <small>UNITS: Millimeters</small> | | <small>SIZE: A3</small> |
| <small>LICENSE: CC0 Public Domain Dedication</small> | <small>SCALE:</small> | | |